



The Buzz

The Buzz is a multi-functional space that can be used for conferences, community activities, parties and drinks functions. A fully accessible space flowing with natural light, with adjustable black out curtains that allow for lighting to be tailored to the specifications of your event.

The semi-sprung harlequin floor, theatrical lighting and optional mirrored wall make The Buzz the ideal venue for dance and drama performances or workshops too. A self contained venue that can also be used in combination with The Hub for either a breakout space or catering area. A range of catering options are available from a simple sandwich lunch to a formal dining experience.

This modern and impressive setting will provide the perfect backdrop for any type of event.



Specifications

All facilities described plus:

- Projector and large screen
- Sound system with up to two microphones (stand, handheld or lapel)
- Can be integrated with outdoor space
- Air-conditioned

Capacity

- | | |
|-------------|-----|
| • Standing | 200 |
| • Theatre | 120 |
| • Cabaret | 96 |
| • Boardroom | 60 |



Contact Beth McCreedy to discuss your hire requirements
0121 274 0431 or info@touchbasepears.org.uk

TouchBase Pears





Meetings

A range of bright and contemporary, fully accessible meeting rooms than can accommodate group sizes big and small. Larger rooms include built-in induction loops and interactive presentation screens. For smaller rooms a mobile induction loop and screen facilities can be provided.

Blinds are fitted in all meeting rooms to ensure privacy and allow the lighting to be tailored to your needs. Our onsite café can provide catering options ranging from tea, coffee and biscuits to a cold buffet.

Free wifi is available and our warm and welcoming reception team will be available to support to you on the day to guarantee the smooth running of your meeting.

We are located on main transport routes providing an easy commute to and from Birmingham city centre.



Room 7 & 8 / 9 & 10

- Theatre/Standing 60
- Boardroom/Classroom 32
- Circle 40

Room 7 / 10

- Theatre/Standing 20
- Boardroom/Classroom 14
- Circle 20

Room 8 / 9

- Theatre/Standing 30
- Boardroom/Classroom 20
- Circle 25

Contact Beth McCreedy to discuss your hire requirements
0121 274 0431 or info@touchbasepears.org.uk

TouchBase Pears



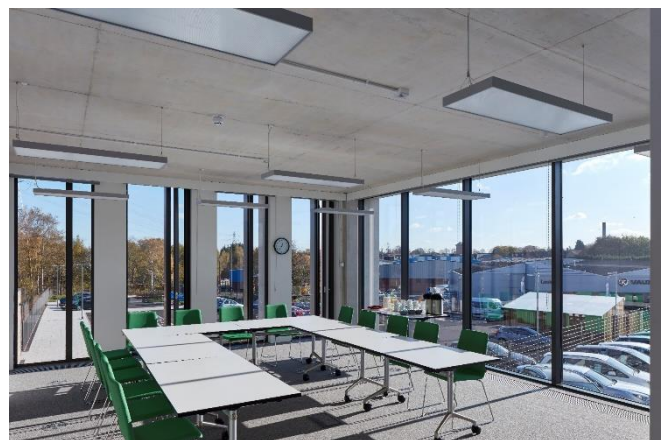
Office Space

TouchBase Pears Business Centre provides a variety of desk rental, open plan office space options and meeting rooms for anywhere between 1 and 180 people. With our on-site café and flexible hire packages, there's something to suit every business.

All facilities at TouchBase Pears are fully accessible, including induction loops, audio visual equipment, and accessible toilets and signage throughout.

Our reception staff are trained to offer a warm welcome and make sure things run smoothly, whether you're working at a hot desk for the day or running a large-scale conference.

A range of organisations are already based on-site offering networking opportunities. We are located on main transport routes providing an easy commute to and from Birmingham city centre.



Benefits

- Reception
- Furniture
- Parking
- Onsite Café
- Printing access
- Lifts
- Bicycle parking
- Tea point
- Conference
- Wifi & utilities
- Meeting room hire discount

Contact Beth McCreedy to discuss your hire requirements
0121 274 0431 or info@touchbasepears.org.uk

TouchBase Pears



Pricing

Office & Meetings

Room/Area	Hire Period	Cost
Desk Rental	Day	£15
	Week (Mon-Fri)	£65
	Month (Calendar)	£230
	6 Months	£1150
Subscription Desk	Up to 5 Days Per Month	£60
	Up to 10 Days Per Month	£120
	Up to 15 Days Per Month	£180
Room 7	Full Day (9am-5pm)	£320
	Half Day (9am-1pm or 1pm-5pm)	£210
	Evening (5pm-7pm)	£80
	Per Hour	£55
Room 8	Full Day (9am-5pm)	£400
	Half Day (9am-1pm or 1pm-5pm)	£260
	Evening (5pm-7pm)	£100
	Per Hour	£65
Room 7 & 8	Full Day (9am-5pm)	£560
	Half Day (9am-1pm or 1pm-5pm)	£365
	Evening (5pm-7pm)	£140
	Per Hour	£95
Meeting Rooms	Full Day (9am-5pm)	£240
	Half Day (9am-1pm or 1pm-5pm)	£155
	Evening (5pm-7pm)	£60
	Per Hour	£40

*All rates are exclusive of VAT which will be added at 20%

**Discounts will be applied to charity, social enterprise, community group & student bookings

Contact Beth McCreedy to discuss your hire requirements

0121 274 0431 or info@touchbasepears.org.uk

TouchBase Pears

 sense

Pricing

Conference & Events

Room/Area	Hire Period	Cost
The Buzz	Full Day (9am-5pm)	£960
	Half Day (9am-1pm or 1pm-5pm)	£625
	Evening (5pm-7pm)	£240
	Per Hour *(Minimum 2 hours)	£160
The Hub	Full Day (9am-5pm)	£640
	Half Day (9am-1pm or 1pm-5pm)	£415
	Evening (5pm-7pm)	£160
	Per Hour	£105
The Hub (Half)	Full Day (9am-5pm)	£400
	Half Day (9am-1pm or 1pm-5pm)	£260
	Evening (5pm-7pm)	£100
	Per Hour	£65
Studio One	Full Day (9am-5pm)	£400
	Half Day (9am-1pm or 1pm-5pm)	£260
	Evening (5pm-7pm)	£100
	Per Hour	£65
Studio Two	Full Day (9am-5pm)	£240
	Half Day (9am-1pm or 1pm-5pm)	£155
	Evening (5pm-7pm)	£60
	Per Hour	£40
Music Studio	Full Day (9am-5pm)	£240
	Half Day (9am-1pm or 1pm-5pm)	£155
	Evening (5pm-7pm)	£60
	Per Hour	£40

*All rates are exclusive of VAT which will be added at 20%

**Discounts will be applied to charity, social enterprise, community group & student bookings

Contact Beth McCreedy to discuss your hire requirements

0121 274 0431 or info@touchbasepears.org.uk

TouchBase Pears

 sense